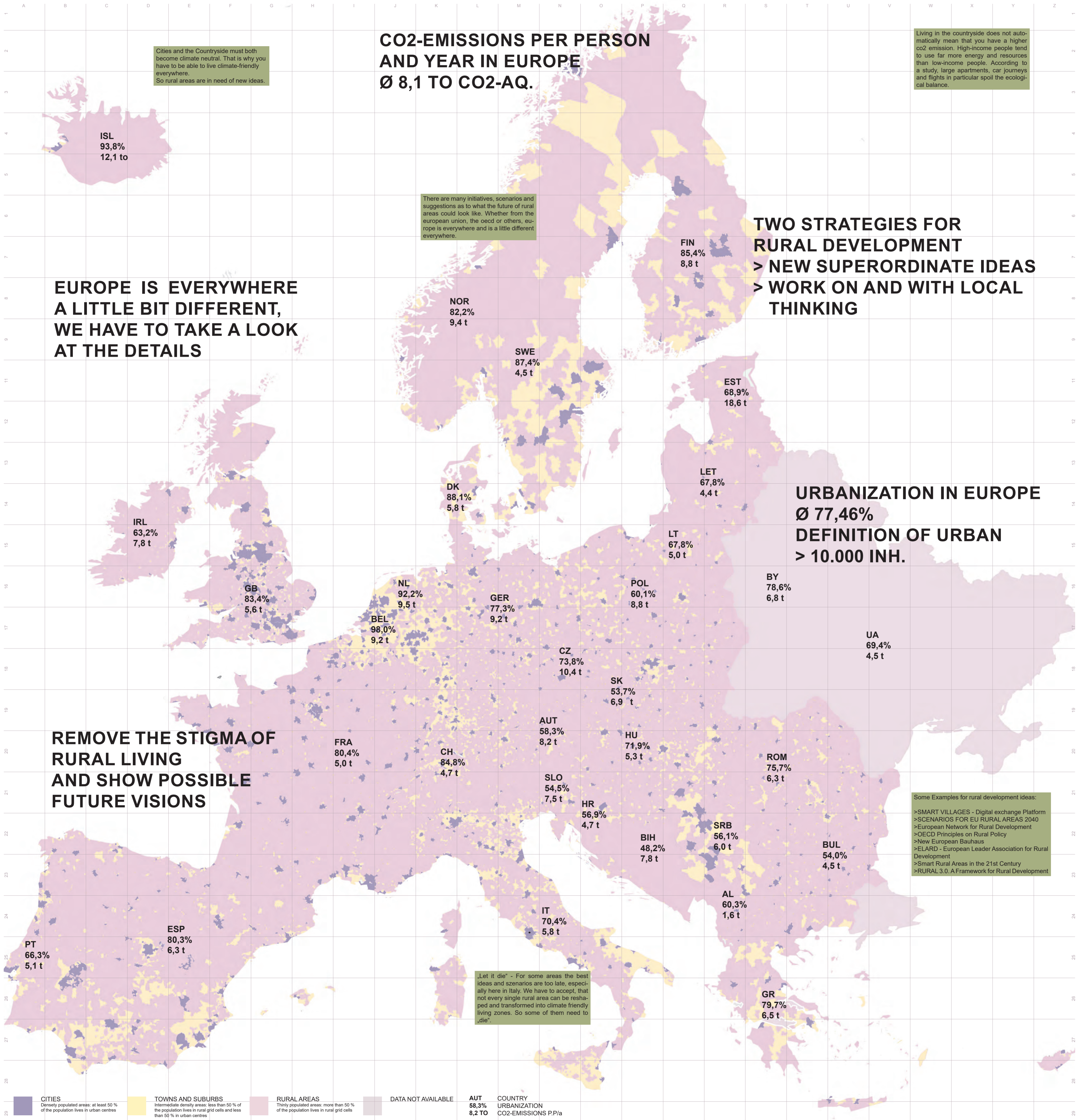


RURAL AREAS: OFF TO THE FUTURE



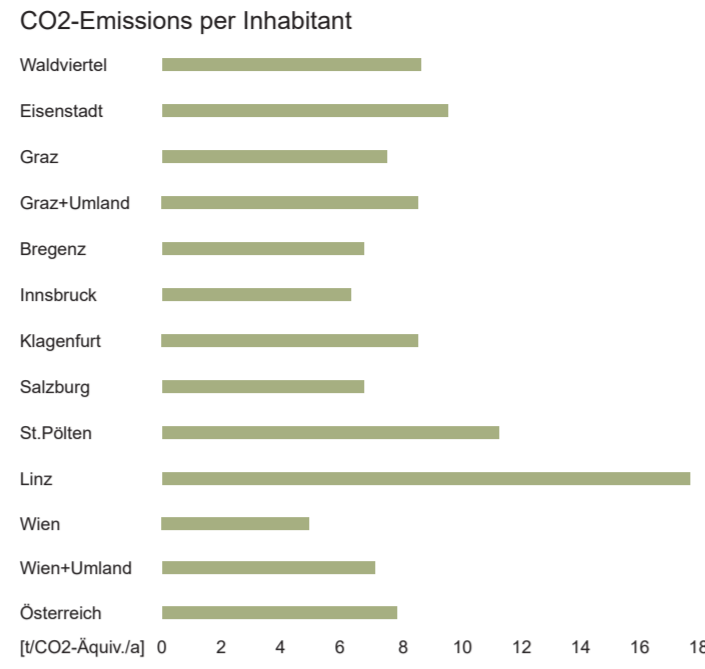
RURAL AREAS: OFF TO THE FUTURE

Benjamin Altrichter

THERE IS NOT MUCH TIME LEFT!

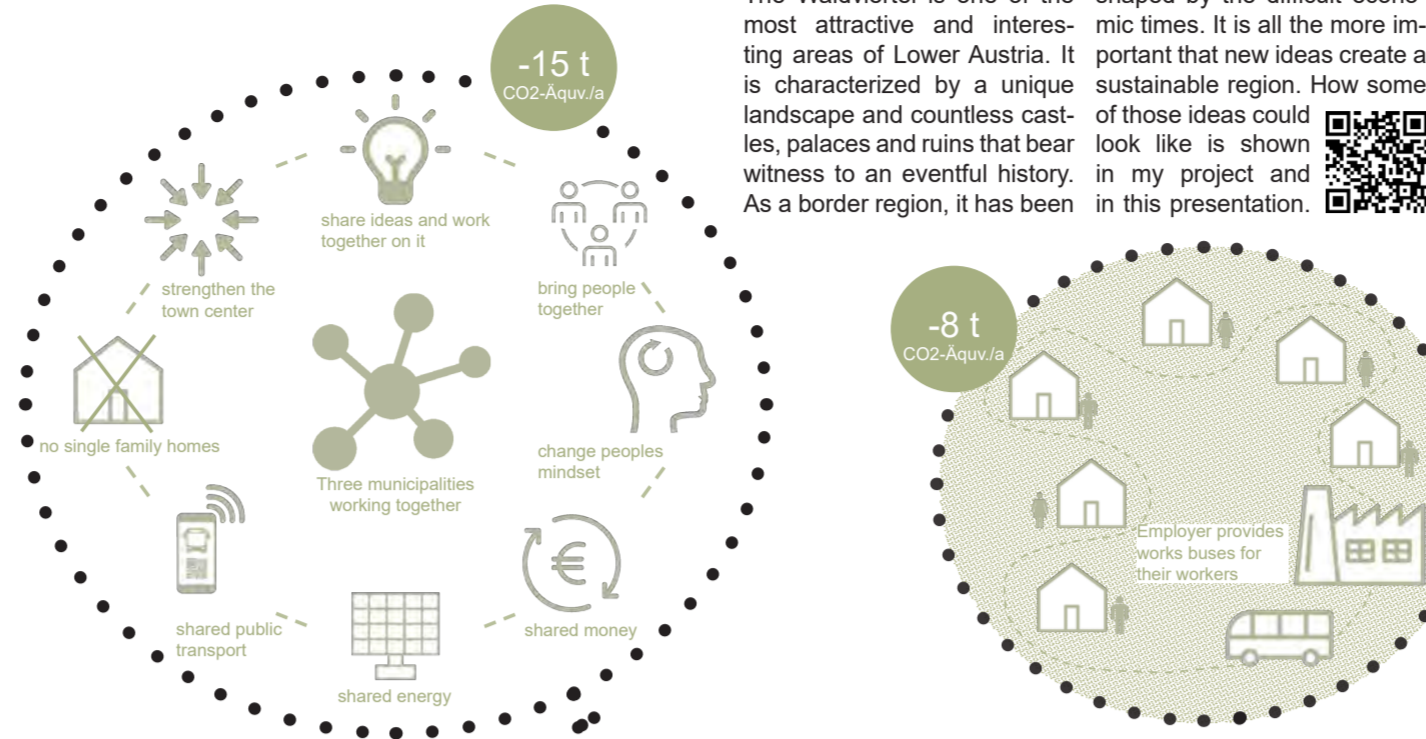
In order to be able to cope with the current problems of climate change a radical rethinking is required in our society. Global warming can only be reduced to a tolerable level if all responsible sub-areas work together and improve. Earth, water, air are the most important prerequisites for life on our planet. Soil consumption is an important aspect that is directly related to the loss of biodiversity on our planet. A piece of the puzzle that is easy to prove, yet difficult to tame. When it comes to this topic, rural areas often come to mind, where everyone lives in single-family houses and every household owns at least one if not two cars. However, if you look at the CO2

emissions per capita, you will notice that the differences between urban and rural areas are sometimes only marginal. In particular, the CO2 footprint calculator introduced a few years ago is to be understood more as a marketing gimmick by the oil industry in order to hand over responsibility to the individual and thus distract from one's own irresponsibility. Here you get to a CO2 clock from the German newspaper taz that shows the amount of greenhouse gases that the world as a whole is still allowed to emit in order to limit global warming to well below two degrees and if possible even to 1.5 degrees.



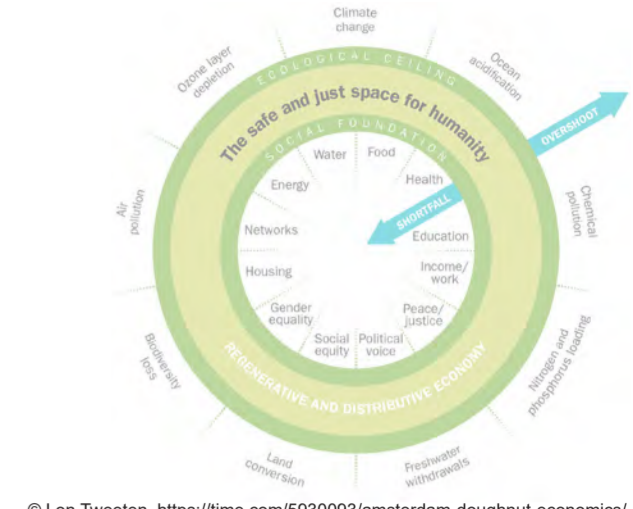
THE FUTURE OF THE WALDVIERTEL

The Waldviertel is one of the most attractive and interesting areas of Lower Austria. It is characterized by a unique landscape and countless castles, palaces and ruins that bear witness to an eventful history. As a border region, it has been shaped by the difficult economic times. It is all the more important that new ideas create a sustainable region. How some of those ideas could look like is shown in my project and in this presentation.



FROM AN EGO- TO AN ECO SYSTEM

Doughnut economic science explores the mindset and ways in which of thinking how humanity is able to meet the needs of all within the means of the planet. Kate Raworth, who developed the Doughnut economics, wrote a book about it in 2017, where she described why it is necessary to bring humanity into the doughnut. We need to confirm that nobody falls short on life's necessities (from food and housing to tending and political voice), whereas making certain that jointly we have a tendency to do not overshoot our pressure on Earth's life-supporting systems, on that we have a tendency to essentially rely – like a stable climate, fertile soils, and a protecting ozoneosphere. The Doughnut of social and planetary boundaries is a playfully serious approach to framing that challenge, and it acts as a compass for human progress this century. More information is shown in this BBC-Video, where Kate Raworth explains here plans with Amsterdam.

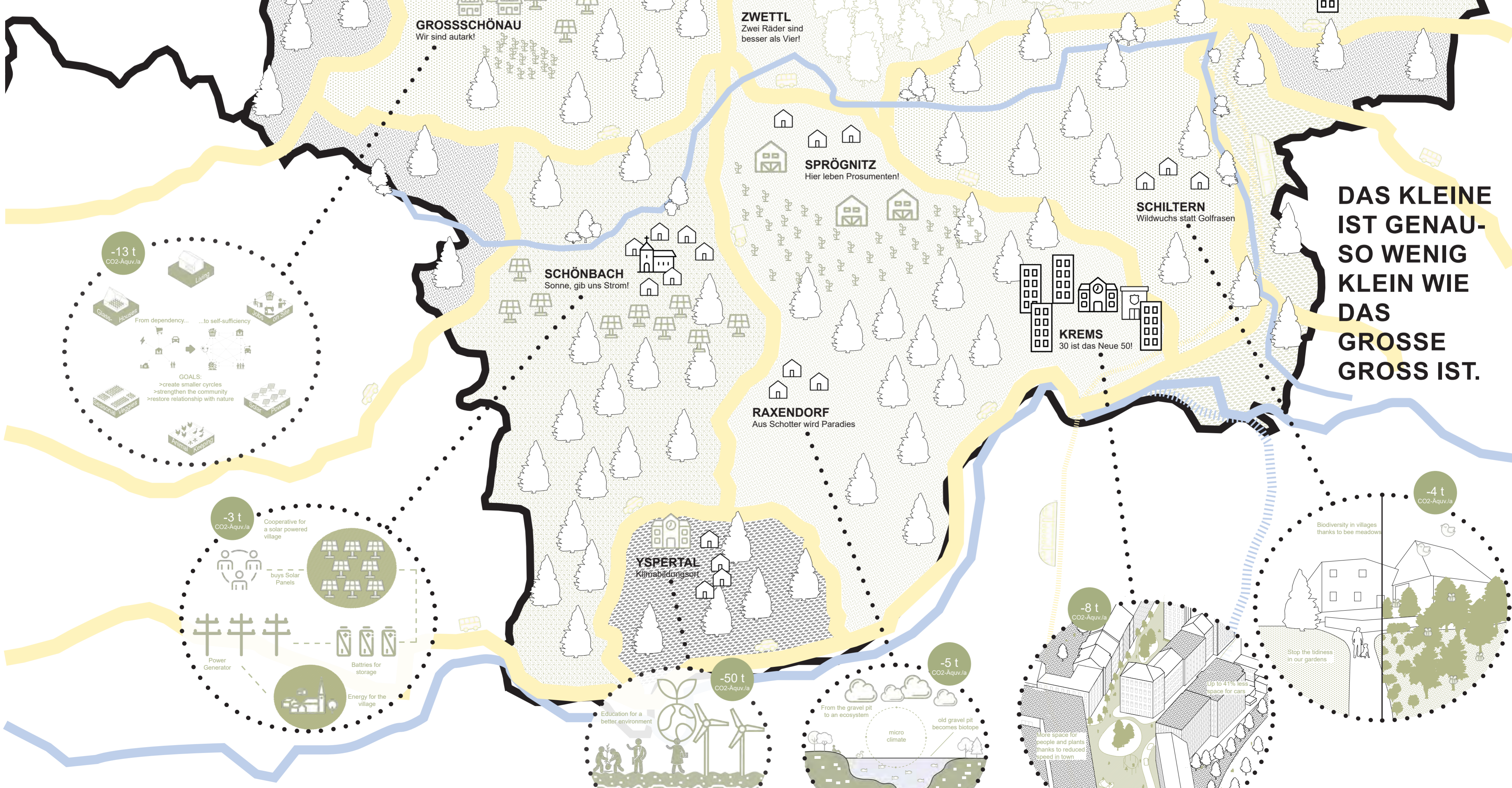


THINK GLOBAL, ACT LOCAL!

COUNTRYSIDE? WHY?

More and more cultural landscape is disappearing. "City" and "countryside" approach each other. Where not so long ago intensive agriculture was practiced, single-family houses are now lined up in rows. Mostly without any claim to building density, let alone to a building culture embedding in the surrounding stock. At one end of the town a car-friendly "Blaue Lagune", at the other an industrial area including local suppliers with plenty of parking spaces. The deserted historic

town center in between, plagued by vacancies, functions as a transit area for individual traffic with the corresponding misanthropic emissions. From year to year something new is added, or historical substance is removed, mostly in small steps, with little outcry from the local population. That the reason why especially the countryside needs new and customized ideas in the best case from the local people to bring back identity.



DAS KLEINE IST GENAU-SO WENIG KLEIN WIE DAS GROSSE GROSS IST.

THIS ISN'T AN END, IT'S A SHIFT!